



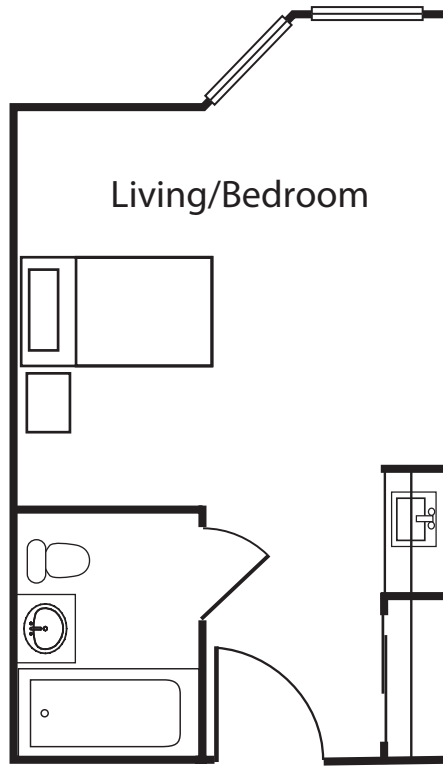
# Parkwood

A LIFE CARE SERVICES® COMMUNITY

ASSISTED LIVING

## Azalea

Studio • 313 sq. ft.



Date \_\_\_\_\_ Apartment # \_\_\_\_\_

Community Fee \$ \_\_\_\_\_

Other \$ \_\_\_\_\_

Total \$ \_\_\_\_\_

**Monthly Fee** \$ \_\_\_\_\_

2nd Person Fee \$ \_\_\_\_\_

Total Monthly Fee \$ \_\_\_\_\_

Prices subject to change without notice.



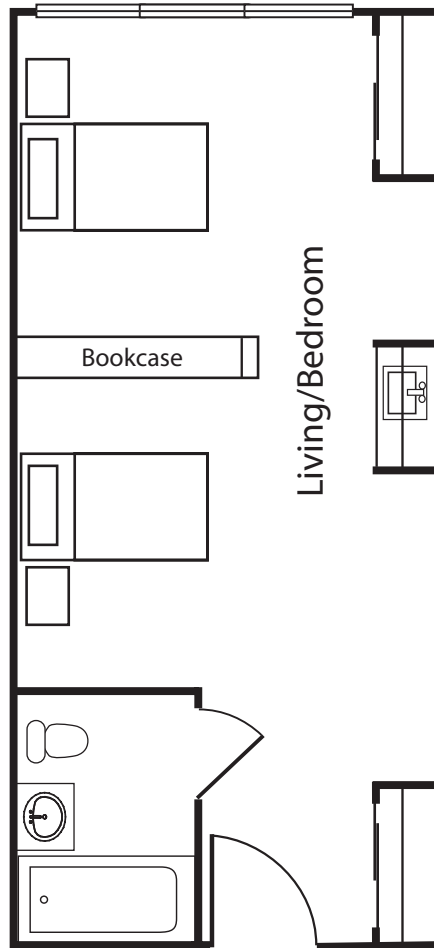
# Parkwood

A LIFE CARE SERVICES® COMMUNITY

ASSISTED LIVING

## Magnolia

Suite • 416 sq. ft.



Date \_\_\_\_\_ Apartment # \_\_\_\_\_

**Community Fee** \$ \_\_\_\_\_

Other \$ \_\_\_\_\_

Total \$ \_\_\_\_\_

**Monthly Fee** \$ \_\_\_\_\_

2nd Person Fee \$ \_\_\_\_\_

Total Monthly Fee \$ \_\_\_\_\_

Prices subject to change without notice.



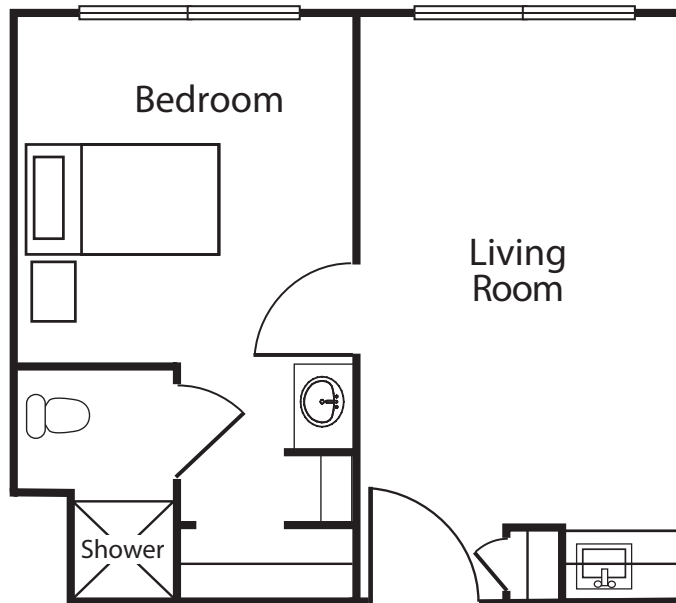
# Parkwood

A LIFE CARE SERVICES® COMMUNITY

ASSISTED LIVING

## Willow

One Bedroom • 442 sq. ft.



Date \_\_\_\_\_ Apartment # \_\_\_\_\_

Community Fee \$ \_\_\_\_\_

Other \$ \_\_\_\_\_

Total \$ \_\_\_\_\_

Monthly Fee \$ \_\_\_\_\_

2nd Person Fee \$ \_\_\_\_\_

Total Monthly Fee \$ \_\_\_\_\_

Prices subject to change without notice.

2600 Parkview Lane, Bedford, TX 76022 • P (817) 354-6556 • F (817) 354-1808 • [ParkwoodCareLCS.com](http://ParkwoodCareLCS.com)